

How to use the FlashAir™ SD Card

Initial Setup of FlashAir™ SD Card

It is important to change the factory default SSID and the password of the FlashAir SD Card by going through this step in order to protect your recording files.

- 1 Insert the FlashAir SD Card into the DS-7000/3500 and then format it with the recorder.
- 2 Remove the FlashAir SD Card and then reinsert it and press the WLAN (F3) button on the recorder.



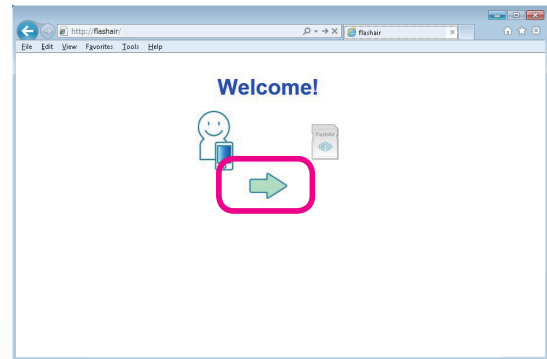
- When the FlashAir SD Card is recognized, the F3 button automatically becomes the WLAN button.

- 3 Change the wireless connection destination of the PC to “flashair”.

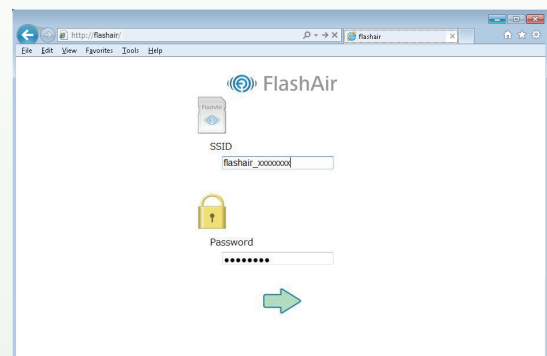


- The initial password is “12345678”.

- 4 Open the Internet browser and enter <http://flashair/> for the URL.
- 5 When the initial setup screen appears, click the arrow.



- 6 Set the SSID and Password and then click the arrow.



- Set from 8 to 63 alphanumeric characters for the password.

- 7 When the settings are finished, remove the FlashAir SD Card from the DS-7000/3500.

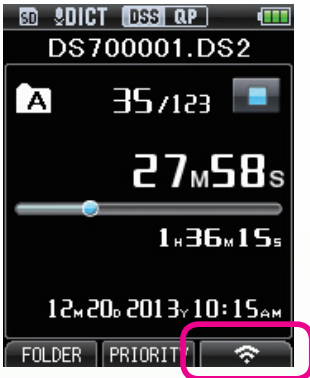
Note

If you forget the password, format the FlashAir SD Card and configure the settings again.

Usage in the DS-7000/3500

- 1 Turn on the recorder.

- 2 Insert the FlashAir SD Card into the SD card slot in the recorder.
 - When the FlashAir SD Card is recognized, the F3 button automatically becomes the WLAN button.
- 3 Press the WLAN (F3) button on the recorder.



- The recorder switches to the WLAN connection standby state.

Note

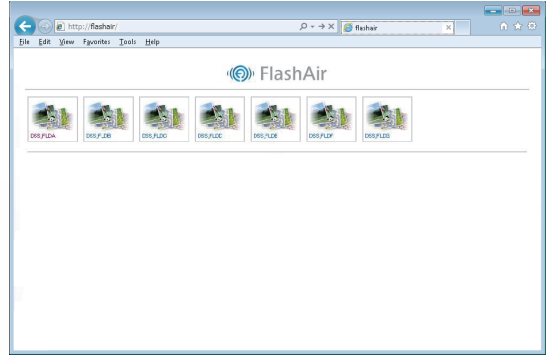
In the WLAN connection state, the recorder cannot be operated. To perform recording and other operations, press the EXIT (F3) button.

Download to PC

- 1 After the recorder switches to the WLAN connection standby state, change the wireless connection destination of the PC to “flashair” and enter the password you set.



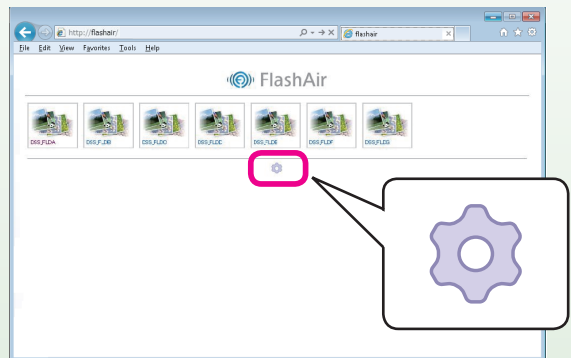
- 2 Open the Internet browser and enter <http://flashair/> for the URL.



- The folders and files in the FlashAir SD Card are displayed.
- 3 Select a file and then download it.

Changing the Password of the FlashAir™ SD Card

- 1 Connect the recorder to the PC on which you set the password.
 - The settings button appears in the browser.
- 2 Click the settings (⚙️) button.



- The screen switches to the SSID and password settings screen and the password becomes able to be changed.

Note

If you want to change the SSID and password on a PC other than the one on which you first set the password, format the FlashAir SD Card and then change them from the initial setup screen.